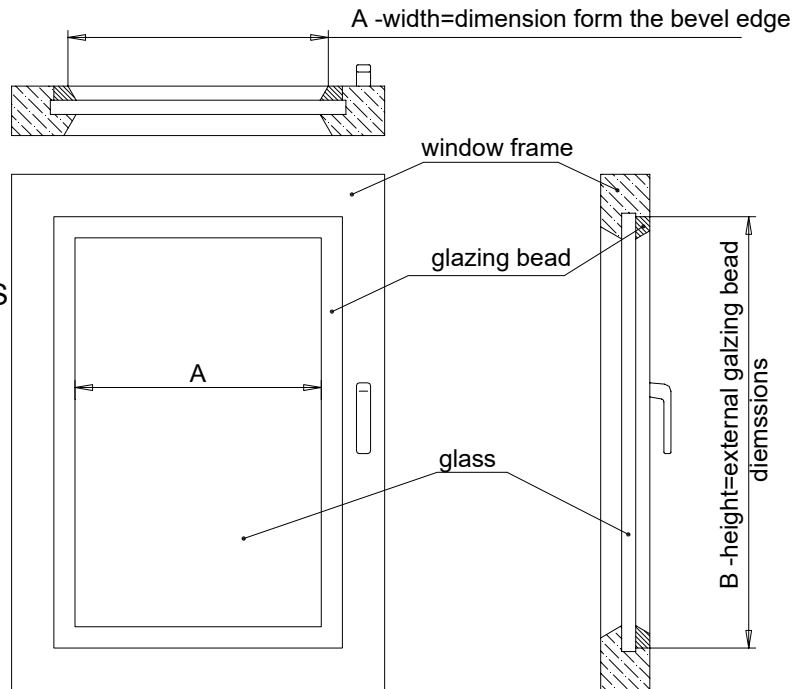


## Measurement and assembly of Vegas Klaudia

### 1 - 1 - WINDOW MEASUREMENT AS PER THE GLAZING BEADS BEVEL EDGES

#### MANUFACTURING DIMENSIONS

Cassette	"A" minus 0,2 cm
Tube	"A" plus 0,2 cm
Bar	"A" minus 1,5 cm
Guide rail	"B" minus 5,2 cm

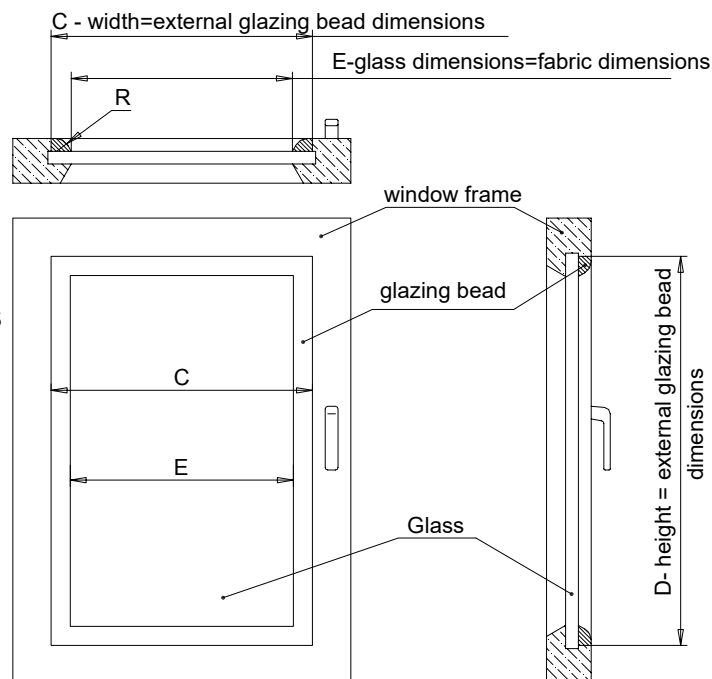


### 2 - WINDOW MEASUREMENT AS PER GLAZING BEAD EXTERNAL EDGES.

CAUTION: The measurement should be taken for windows with rounded galzing beads where precise measurement (like in p.1) is not possible. For this measurement, the fabric dimensions (width) must be given.

#### MANUFACTURING DIMENSIONS

Cassette	"C" minus 2,4 cm
Tube	"C" minus 2,0 cm
Bar	"E" glass dimension
guide rail	"D" minus 5,2 cm



## Measurement and assembly of Vegas Klaudia

### 3 – Vegas Klaudia Components

Nr	Name	Quantity per set	Notes
1	Vegas Klaudia cassette	rm	
2	12mm Mounting tape	3	
3	12mm Foam tape	rm	self-adhesive double-sided
4	Tube 13,5	rm	
5	Fabric	rm	
6	15mm Polyester tape	rm	self-adhesive double-sided
7	Tube end adapter	2	
8	6mm Mounting strip	rm	stiffening the fabric
9	Bottom bar	rm	
10	Seal	rm	rubber or brush
11	Left bottom bar end cap guide	1	
12	Right bottom bar end cap guide	1	
13	Vegas Klaudia Left side plate	1	
14	Vegas Klaudia Right side plate	1	
15	Vegas Klaudia self-blocking mechanism	1 set	
16	Vegas Klaudia side cover	1	*
17	Vegas Klaudia side cover	1	*
18	Vegas Klaudia guide rail	rm	
19	9mm Foam tape	rm	self-adhesive double-sided
20	Vegas Klaudia Left guide rail end cap	1	
21	Vegas Klaudia Right guide rail end cap	1	
22	Ball chain	rm	
23	Ball chain clip	1 set	
24	Ball chain weight	1	
25	3 x 12mm Phillips screw	17	
26	Bottom bar rod weight 4mm )	rm	use for the roller blinds with stiff fabric - if needed

\*The set of side covers for this blind includes the eyelet side cover (hole for the ball chain) and full side cover. The blind operation side (mechanism and ball chain assembly) determines the use of the appropriate set: eg. blind operation by the right side of the window – the set of covers marked with R should be used – where the right cover is with eyelet; where the blind operation is by the left side of the window – covers marked L should be used – where the left covers is with eyelet.

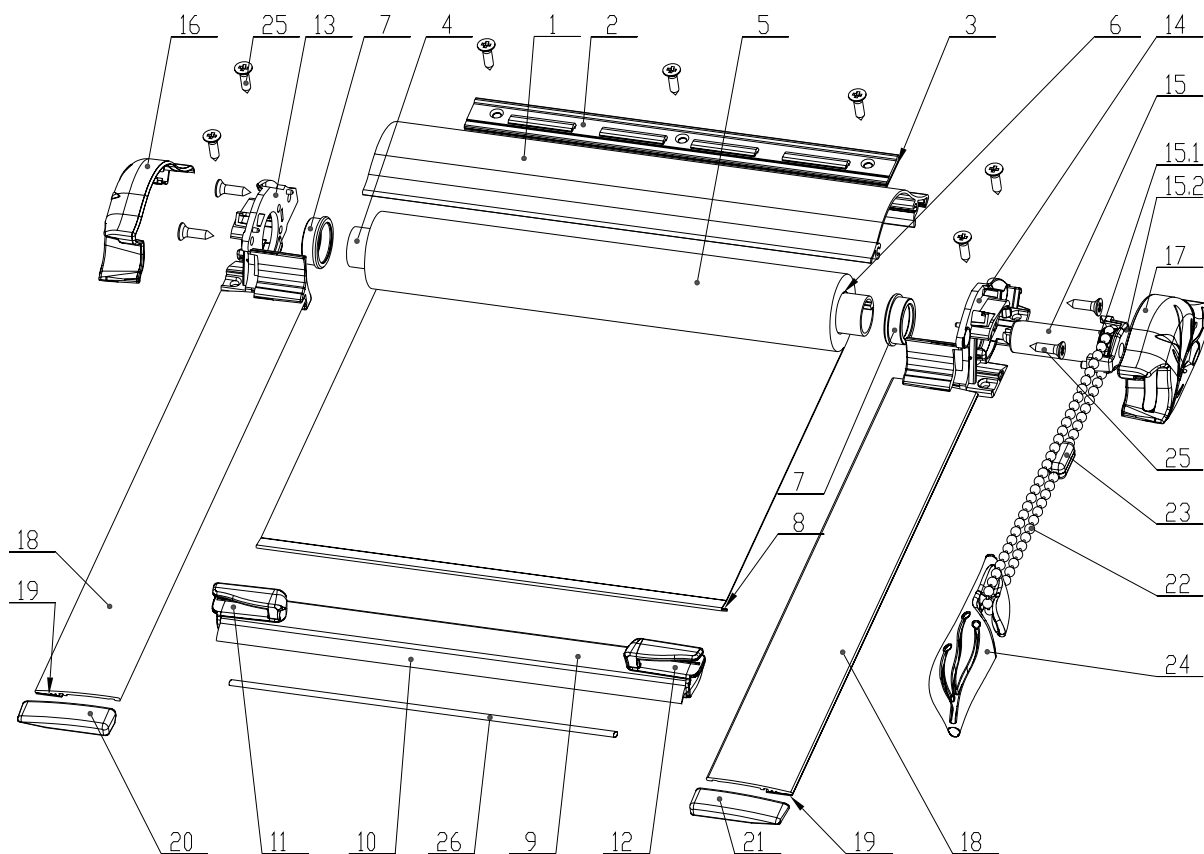
### 4 – ROLLER BLIND PREPARATION

4.1. 4.1. Prepare cassette (1), bottom bar (9), seal (10), tube 13,5mm (4), 2pcs of guide rail (18) with foam tape (19) and fabric (5) according to the measurements from point 1 and 2. The length dimensions of the components should be accurate and the sides of the fabric perpendicular.

4.2. 4.2. Stick the top edge of the right side of fabric (5) to the tube (4) with a 15mm foam tape (6). Roll the fabric (5) on the tube (4). Stick 6mm mounting tape (8) to the bottom edge of the left side of fabric (5), bend the bottom edge of fabric (mounting tape inwards) and slide into the top channel (higher) of the bottom bar (9). Slide the rubber or brush seal (10) into the bottom channel of the bar (9) and insert bottom bar end cap guides into both ends: left (11) and right (12).

## Measurement and assembly of Vegas Klaudia

Wrap the blind with a paper self-adhesive tape to protect the fabric against unwinding and accidental damage or dirt. Insert the tube end adapters (7) into the tube (4) both sides.



4.3. Screw the side plate (14) to the right end of the cassette (1) with two 3x12 Phillips screws (25). Insert the rolled fabric assembly into the cassette inserting the tube end adapter (7) into the side plate hole (14). Screw the other side plate (13) to the left side of the cassette (1) so that the tube end adapter (14) on the left side is in its hole.

4.4. Place the ball chain (22) in the bushing (15.1) of the self – blocking mechanism (15) and by turning it set the chain so that the sticking out (closer to the unwinding side of the fabric) part is about 10cm. Remove the paper tape. Insert the self-blocking mechanism (15) into the tube (4) on the blind operation side so that three pins sticking out of mechanism collar (15.2) are in the right holes of the side plate (14) and the collar itself snaps into its catches.

### 5 – ROLLER BLIND AND GUIDE RAILS ASSEMBLY ACCORDING TO THE EDGES OF THE GLAZING BEAD BEVEL.

5.1. Clean and degrease the window surface where the foam tape will be applied.

5.2. Place the roller blind with the top edge of the mounting strip (2) evenly with the top edge of the glazing bead. If the fabric beam touches the top glazing bead, lower the blind, leaving about 0,2cm space.

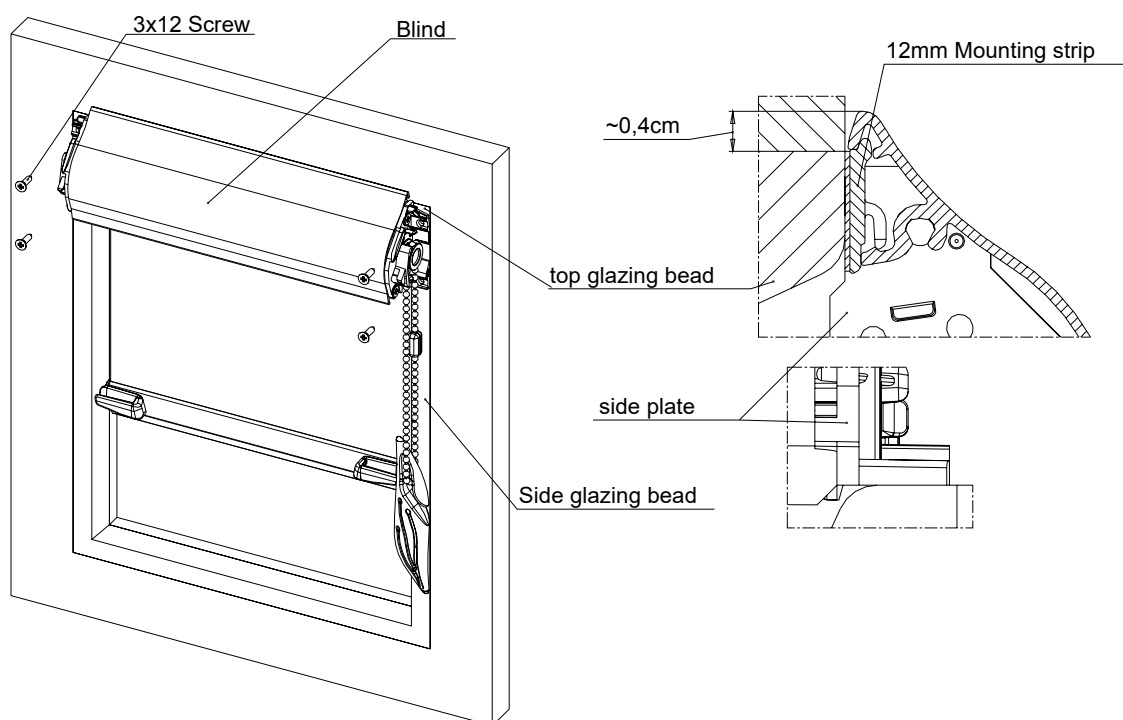
## Measurement and assembly of Vegas Klaudia

Snap mounting strips (2) with 12mm foam tape (3) in the cassette (1) spacing them evenly and the end pieces about 5cm from the cassette verges.

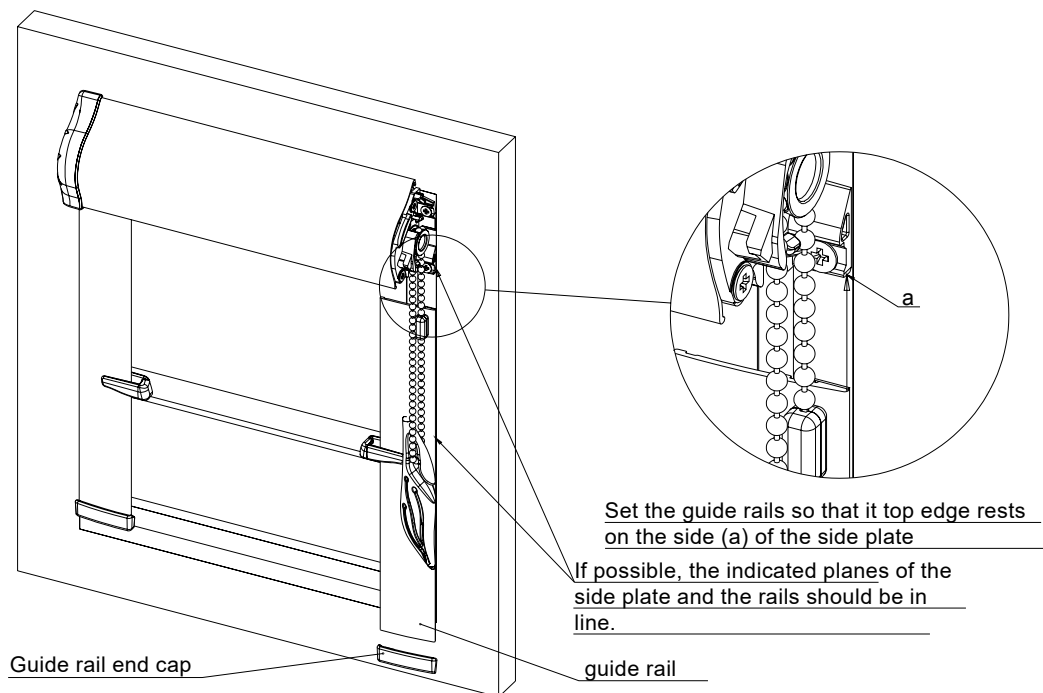
The amount of the mounting strips (2) has to be chosen according to the window width (A) or (C). For windows of up to 60cm wide 2 mounting strips will be needed. For wider windows, add one mounting strip for every additional 30cm, e.g. for 70cm wide window the blind has to be installed on 3 mounting strips and for 110 cm wide window – 4 mounting strips.

Place the blind symmetrically between the side glazing beads. When the blind position is set, mark it with the pencil, remove the protective film from the mounting strip self-adhesive tape (2). By firm pressing the roller blind is fixed to the window. If the fastening seems unstable, then screw the mounting strips (2) to the glazing beads with 3x12 screws (25). Such method of mounting the blind allows taking it off the window for cleaning.

The roller blind can also be installed to the window without the mounting strips (2). In this case, the side plates (13 and 14) are screwed to the glazing beads with four 3x12 screws (25) – the cassette top edge is situated about 0,4cm above the top glazing bead. Check if the fabric beam doesn't touch the top glazing bead.

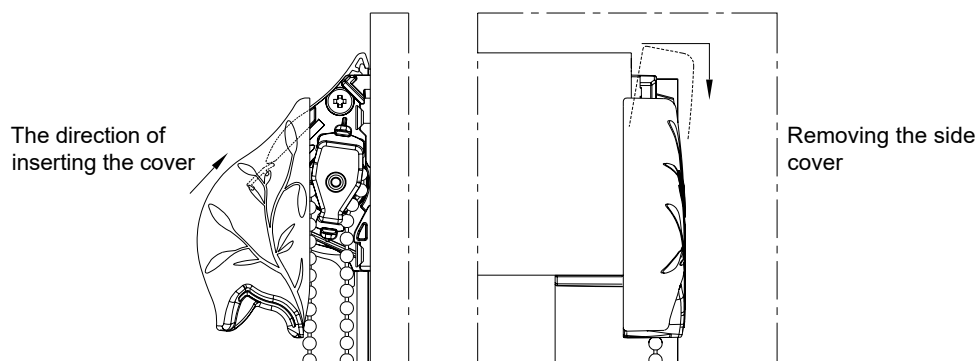


## Measurement and assembly of Vegas Klaudia



5.3. When the guide rails (18) position is set, remove the protective film from the foam tape (19) and by pressing firmly against the window, mount the guides. Bottom bar end cap guides (11 or 12) should be inserted into the guide rail channels

## 6 – SIDE COVERS ASSEMBLY



Pass the ball chain (22) through the eyelet in the cover (16 or 17) and connect its two ends with a clip (23). Mount the side covers (16 or 17) on the sides of the cassette by inserting the tabs in the appropriate channels in the side plates (13 or 14). Add the ball chain weight (24). Check if the roller blind has been mounted properly by removing the cassette from the mounting strips, installing it again and checking cassette stability. Check the roller blind operation by covering and uncovering the window several times.